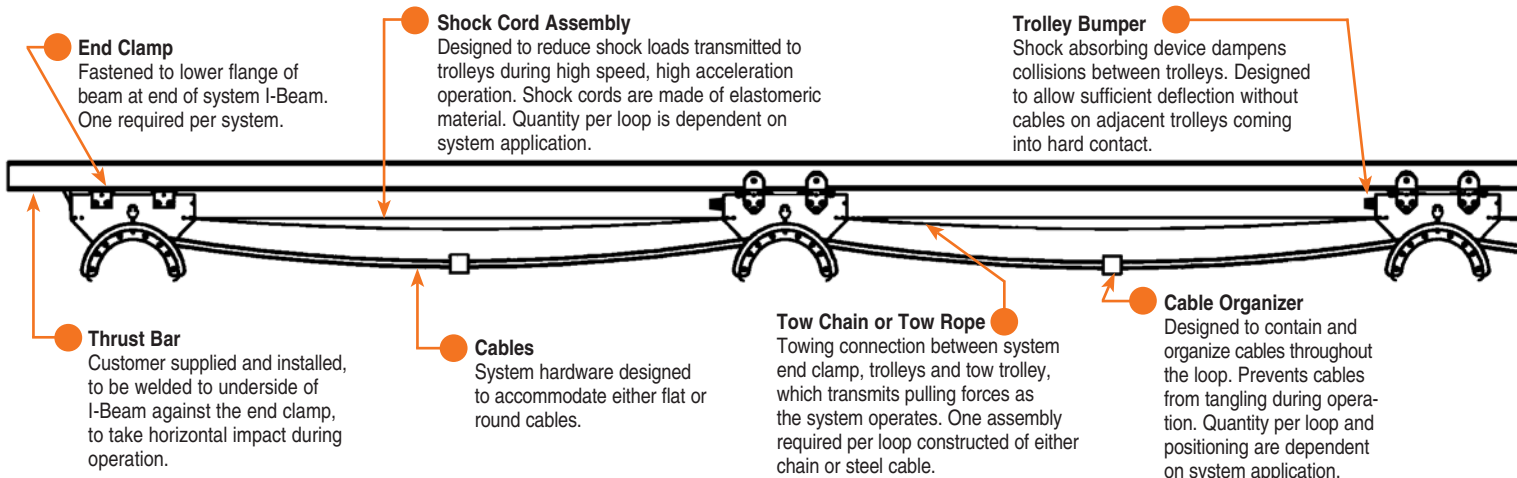
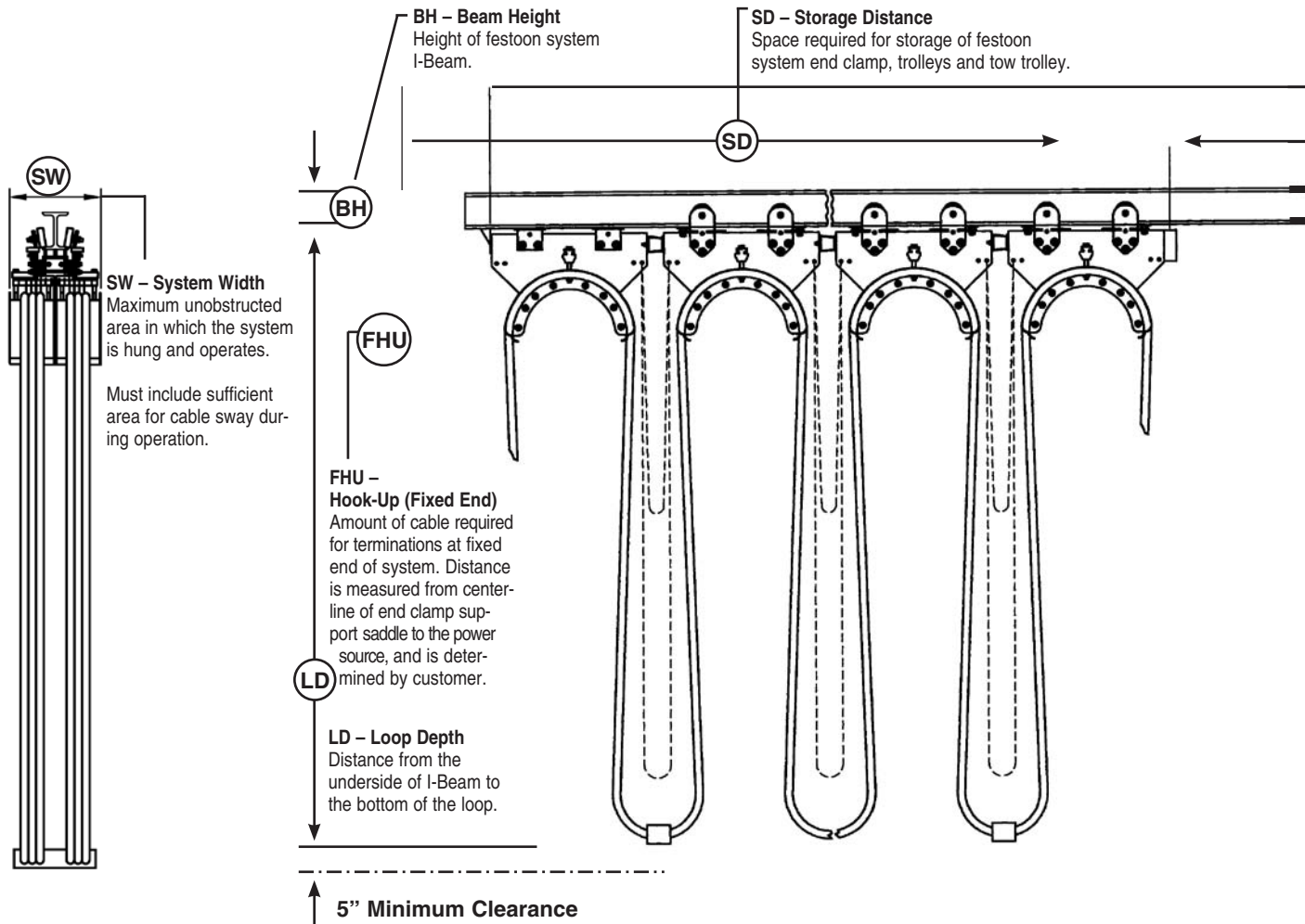
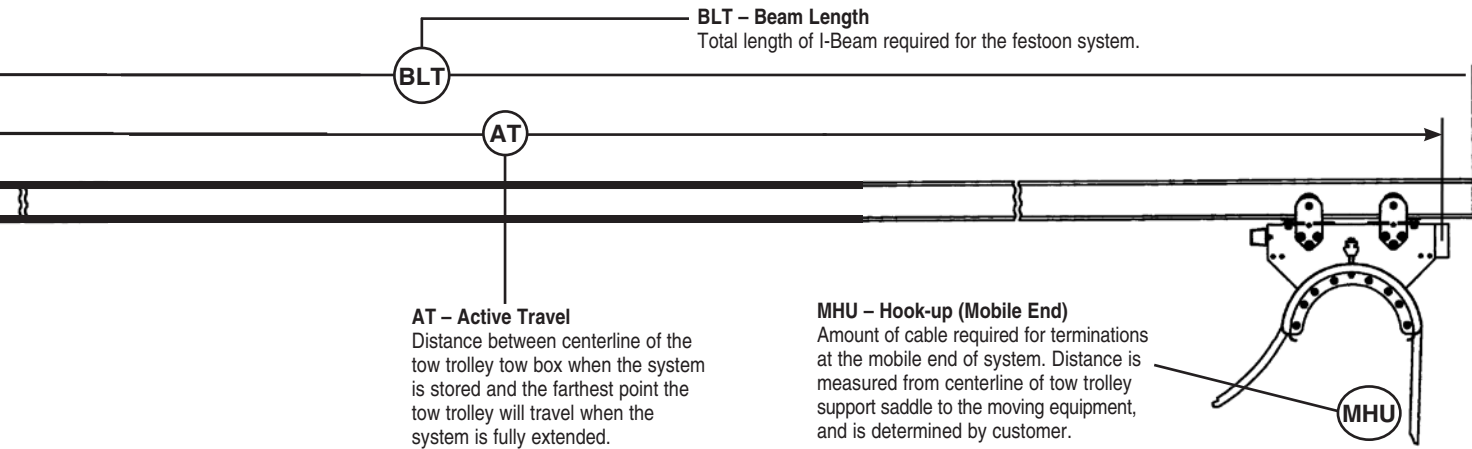


Heavy Duty Festoon Overview

Terms & Definitions



Heavy Duty Festoon Overview



- ◆ Festoon systems are designed to provide electrical power and control signals from a fixed source to a moving consumer. This is accomplished by placing the electrical cables on supports (trolleys) which are free to travel in conjunction with the moving consumer.
- ◆ CONDUCTIX Heavy-Duty Festoon system is designed to provide the utmost protection and care for the electric cables which are the lifeblood of the system. This protection equates to longer cable life, lower maintenance costs, and lower overall operating expenses.

The layout below depicts a typical festoon system, the key components, terms and definitions.

